



## Arcade Gift Prizes Vending Squishy Claw Machine Mini Toy Egg Vending Machine

Our Product Introduction

for more products please visit us on [coin-gamemachine.com](http://coin-gamemachine.com)

### Basic Information

- Place of Origin: Guangdong, China
- Brand Name: Xunying
- Model Number: XY-005
- Price: \$249.00/pieces 1-19 pieces



### Product Specification

- Type: Crane Machine, Claw Machine Arcade For Sale
- Age: >3 Years
- Is\_customized: Yes
- Plug Type: US PLUG
- Name: Toy Claw Machine Arcade For Sale
- Keywords: Claw Machine
- Voltage: 110V/220V
- Operated System: Coin Uperated
- Suitable For: Arcade Game Center
- Warranty: 12 Months/Lifetime Maintenance
- Material: Metal+Acrylic / Customize
- Service: OEM Service
- Weight: 30KG
- Highlight: arcade squishy claw machine,



### More Images



## Products Description

### Overview

#### Essential details

Place of Origin: Guangdong, China Brand Name: Xunying  
Model Number: XY-003 Type: Crane Machine, Plush Toy Doll Grabber machine  
Age: >3 Years Is\_customized: Yes  
Plug Type: all kinds of plugs Product name: Mini Claw Crane Machine  
Size: 55\*47\*110CM Warranty: 12 Months  
Weight: 30KG Capacity: 1 Person  
Certificate: CE Certificate Delivery time: 7-15 Working Days  
Color: Picture Shows Service: OEM Welcomed

Name	Claw Crane machine
Size	L47*W55*H110CM
Weight	30KG
Power	60W
Color	Customized Color
Player	1 play
Voltage	110V/220V
Type	Coin Operated arcade machine
Version	English
Warranty	12 Months+Life time technology support
Certificate	CE
Suitable for	Game center,carnival,shopping mall,gym,amusement park.

# Minii Fire Truck Doll Machine

Small and exquisite, with endless fun



## Four major advantages

Pay attention to details and emphasize quality



Healthy  
materials



Anti slip  
design



Sound upon its  
surroundings



Vivid design



# Product Display

Four colors to choose from

Daytime luminous effect



Night glow effect





# Product parameters

Pay attention to details and emphasize quality

Product Name: Minii Fire Truck  
Doll Machine

Colors: blue, yellow, green, pink  
Suitable age for playing: 2 years  
old and above

Number of players: single player

Overall size: 47x56x100cm

Packaging size: 49x58x102cm

Net weight: 26.5kg

Process: Injection molding, environmentally  
friendly transparent LLDPE+PMMA+wood

Machine voltage: 110V-220V

Floor area: 0.26m<sup>2</sup>

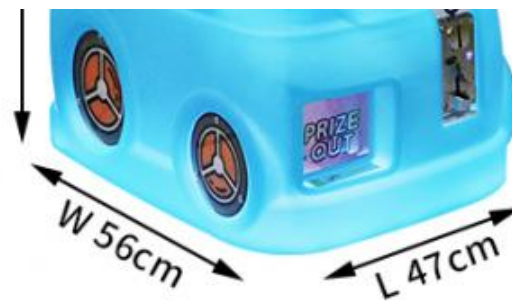
Volume space: 0.26m<sup>3</sup> (Suitable for anime city, amusement  
park, children's playground, amusement park, private  
home, etc.)



Reference for overall dimensions







## Product details

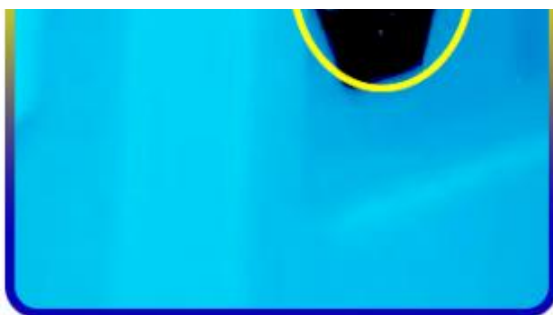
Specially designed for children with bright colors and cute shapes that are not eye-catching



Place the power port switch in the bottom card slot  
Children are not easy to touch, safe

Front door panel design Super large gift mouth for convenient maintenance and repair in the later stage





High precision coin dispenser  
Anti counterfeit and  
anti fishing type



Operation console  
Colorful joystick+large  
buttons



High speed overhead crane  
Clever claw design  
for precise grasping



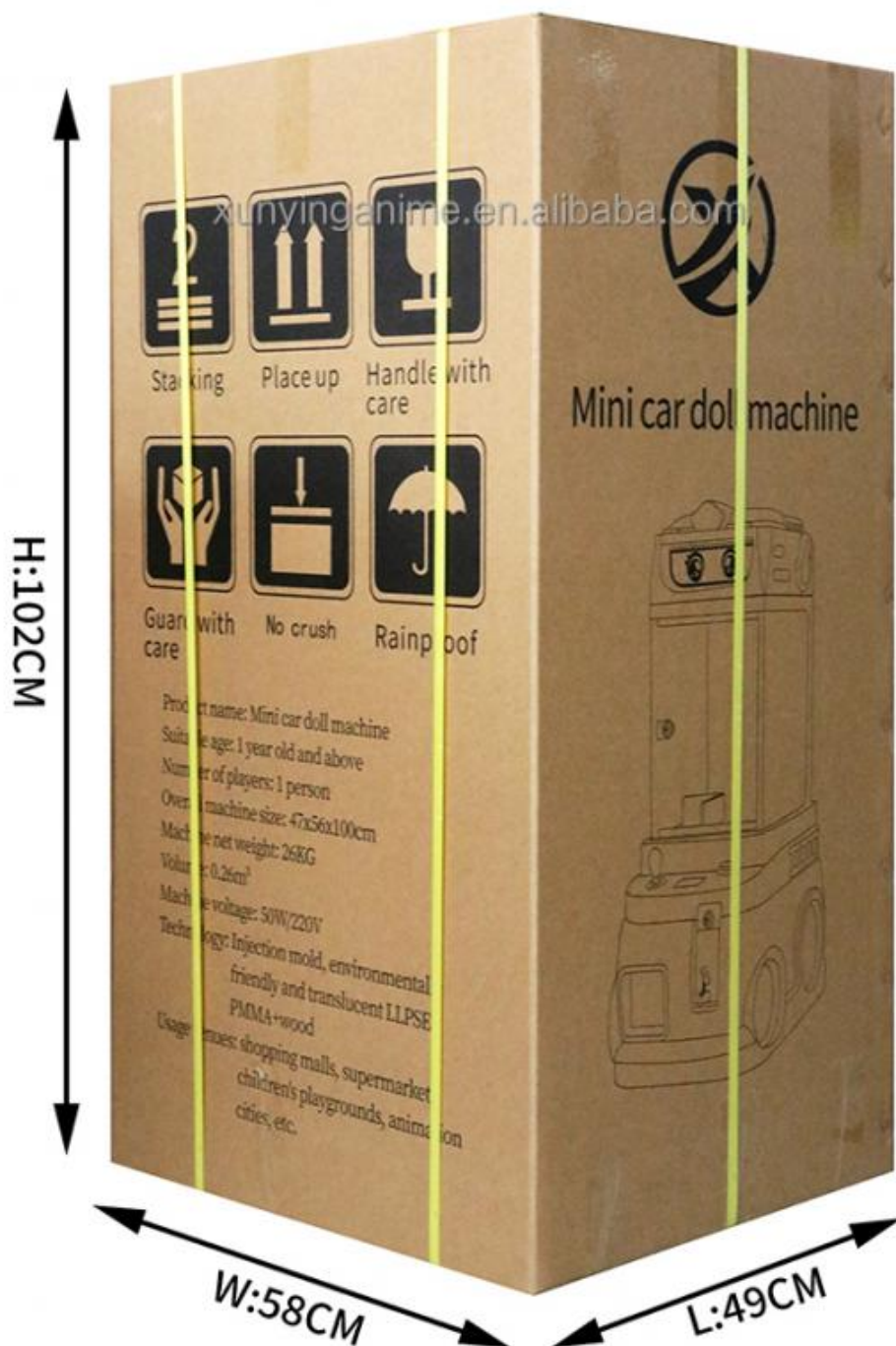
Equipped with meter entry f  
unction Convenient for  
operators to view accounts  
at any time







Packaging size reference



## Usage scenario

The lighting is soft, gentle, and not dazzling





supermarket



mall



community



square



Maternal and Child Store



park

# After-sales service commitment

100% authentic 100% focus 100% trust

## How to repair the machine?

After buying our machine, we will arrange the customer specialist to be responsible for your after-sales problems, the customer manager will be responsible for your order delivery, logistics tracking, inspection, later maintenance, re-purchase and other

issues, you can also call our customer specialist, through the telephone guidance investigation

The problem, generally only need you to move under the hands-on operation can be solved.

### PS Tips:

Our machine factory is strictly tested, after receiving the goods, open the package, plug in the power can be used, if there is no use phenomenon, there may be a small problem caused by turbulence in the process of logistics transportation, you only need to call us, we have professional technicians, troubleshoot the problem. You can do it with your hands.

### Return shipping covers the problem?

Problem description	buyer	seller	solution
Logistics failure		✓	Be sure to check the goods before signing, there is damage on the spot contact customer service photo.
Quality problem		✓	Quality problems, can not be used and other problems, please contact customer service.

## Purchasing instructions

xunyinganime.en.alibaba.com

BUYING TIPS



### One year warranty

In the case of non-human, motherboard, screen, gun, power supply warranty for one year, other vulnerable parts warranty for 3 months; Send parts back to the factory for maintenance, the manufacturer bears the freight within 1 month, 1-3 months each bear the cost, and 3 months later, the freight is borne by



the parent.



## Lifetime maintenance

After the warranty period, with the purchase record can still contact the manufacturer to give after-sales support, free consultation and answer, there is a need to repair or replace parts, will be a preferential cost to support.



**Guangzhou Xunying Animation Technology Co., Ltd.**



+86-15011936333



a770100411@gmail.com



coin-gamemachine.com

Guangzhou Panyu Mingjiang Hose Co., Ltd. (North of Xieshi Highway)