



## Full Size Claw Machine Candy Grabber Fun Zone 80KG Capacity for Entertainment Venues

### Our Product Introduction

for more products please visit us on [coin-gamemachine.com](http://coin-gamemachine.com)

#### Basic Information

- Place of Origin: Guangdong, China
- Brand Name: XunYing
- Model Number: XY-066
- Price: \$290.00/pieces 1-509 pieces



#### Product Specification

- Type: Crane Machine
- Age: >3 Years, >6 Years, >8 Years
- Is\_customized: Yes
- Plug Type: All Kinds
- Name: Toy Crane Claw Machine
- Material: Plastic
- Suitable For: Home/Store/Restaurant/Café/Game Center
- Warranty: 12 Months/Lifetime Maintenance
- Product Name: Toy Crane Claw Machine
- Color: Picture
- Size: 900\*800\*2300mm
- Player: 1 Player
- Weight: 80KG
- Voltage: 110V/220V
- Highlight: claw machine claw candy grabber machine.



#### More Images



## Products Description

## Overview

## Essential details

Place of Origin:	Guangdong, China	Brand Name:	XunYing
Model Number:	XY-066	Type:	Crane Machine
Age:	>3 Years, >6 Years, >8 Years	is_customized:	Yes
Product Name:	Toy Crane Claw Machine	Material:	Wooden & Plastic
Product Size (mm):	900*800*2300	Voltage (V):	110/220
Operating Power (W):	100	Player Quantity:	1
Suitable for:	Home/Store/Restaurant/Café/Game center		
Operation:	Coin operated/Bill acceptor/Card reader/Credit card payment device		

Product Name	Doll Claw Crane Machine	Model Number	MW-TCCM005
Type	Gift game machine	Material	Wooden & Plastic
Product Size	900*800*2300M	Operating Power	100W
Voltage	110/220V	Color	As Picture
Packaging Size	1000*900*2400M	Packaging Weight	100Kgs
Suitable for	Home/ Store/ Restaurant/ Café/ Game center/ Shop/ Market		
Plug Type	CN/TW/UK/EU/US/ITA/CH/ZA/AUS		
Operation	Coin operated/Bill acceptor/Card reader/Credit card payment device		
How to play	1. Put in the coins; 2. Control the claw above the gift position; 3. Press the button to catch the gift. If the gift is caught, take out the gift from the gift mouth.		

# CLAW CRANE MACHINE

...  
NEW  
PRODUCTS



Source factory



OEM/ODM



Free design



Installation  
guide service





MW-TCCM005



MW-TCCM006







**MW-TCCM009**

**MW-TCCM010**



**MW-TCCM011**

**MW-TCCM012**

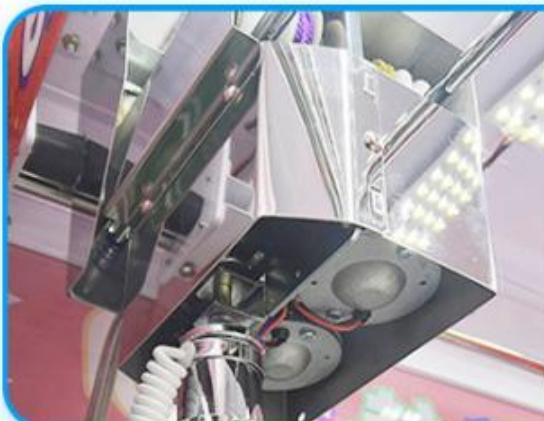




# PRODUCT DISPLAY





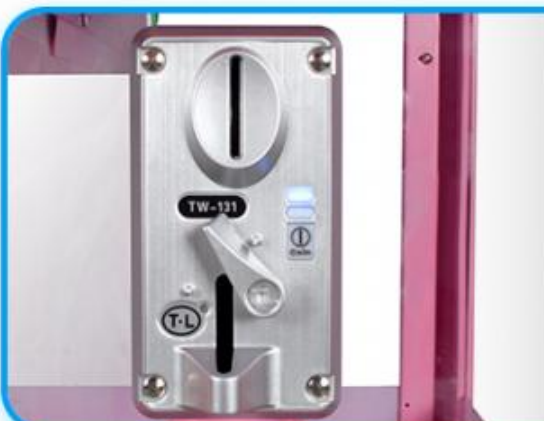


## ANTI-SWING CRANE

High quality stainless steel crane and law

## GAME CONSOLE

High quality joystick and button



## COIN ACCEPTOR

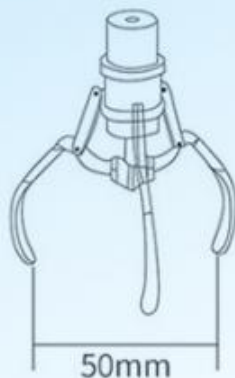
Multi-currency identification  
Auto-induction

# CLAW SIZE OPTIONAL

The claw is the standard claw for claw dolls. If you want to claw gifts of different sizes and materials, you need to consult us to replace the appropriate claw.

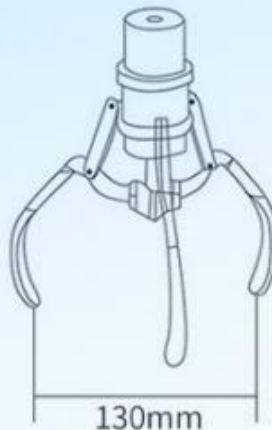


You can freely change and match it



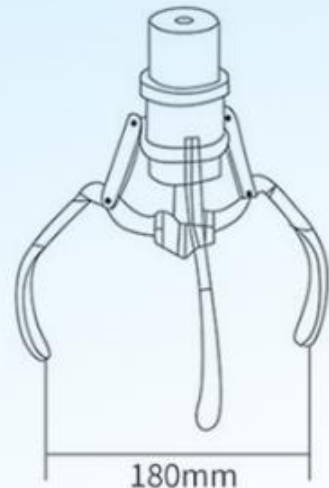
**S**

Gift Size:50-90mm



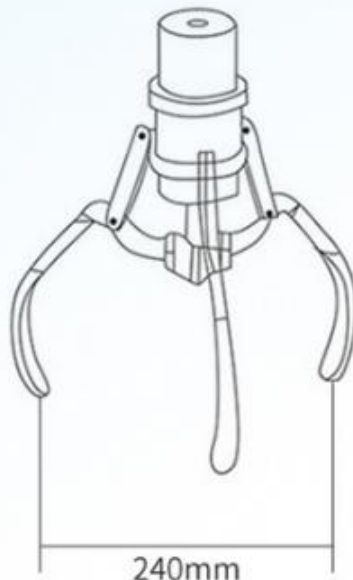
**M**

Gift Size:100-150mm



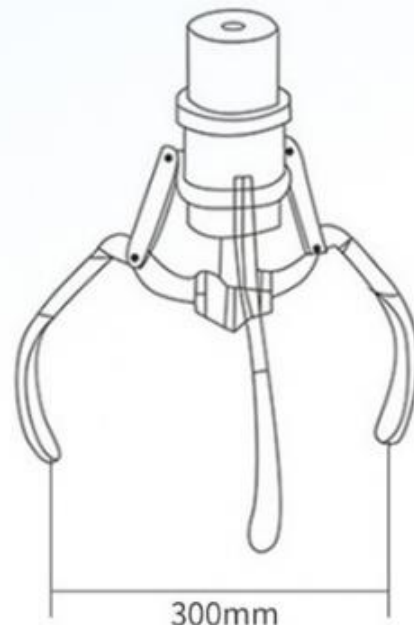
**L**

Gift Size:150-250mm



**XL**

Gift Size:200-300mm



**XXL**

Gift Size:250-350mm

# APPLICABLE PLACES

Suitable for pedestrian streets, shopping malls, supermarkets, playgrounds  
video game cities, KTV, bars, cinemas, cafes, leisure centers, schools, parks  
theme doll claw crane machine shops, etc.



Amusement Park



Shopping Mall



KTV



Pedestrian Street



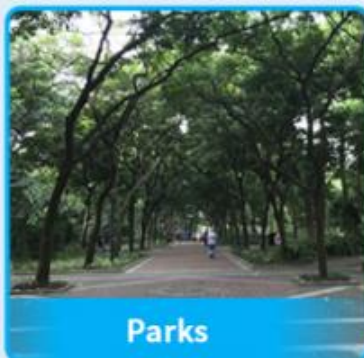
Video Game City



Cinema



Leisure Places



Parks



Theme Parks



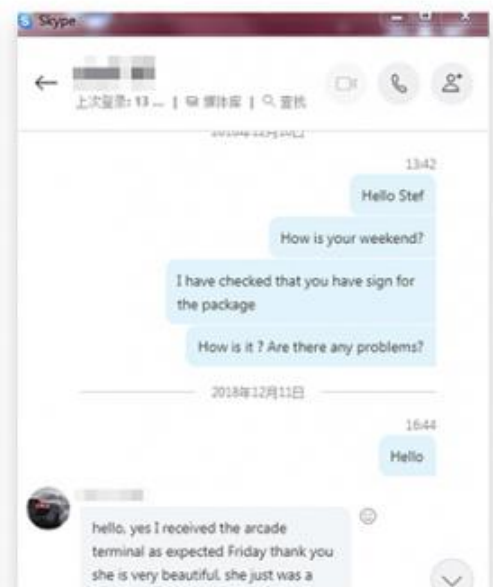
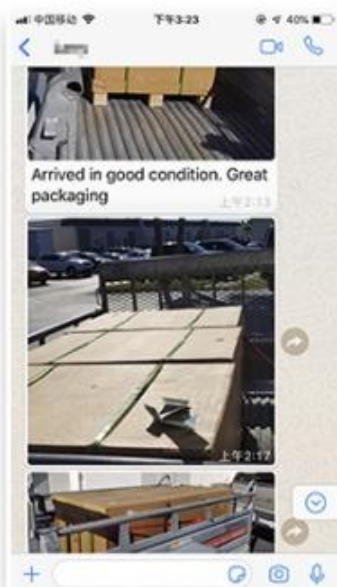
## Package



## WARRANTY

All our machines are under 12 months warranty. If any problems occur within the warranty period under common usage. We will offer repair service or replace for free. Any charge for repairing and material will be undertaken by our company.

If machines are not in the warranty period, we will repair for free and only charge the relevant material cost.



T/T

HSBC





Guangzhou Xunying Animation Technology Co., Ltd.



+86-15011936333



a770100411@gmail.com



coin-gamemachine.com

Guangzhou Panyu Mingjiang Hose Co., Ltd. (North of Xieshi Highway)